

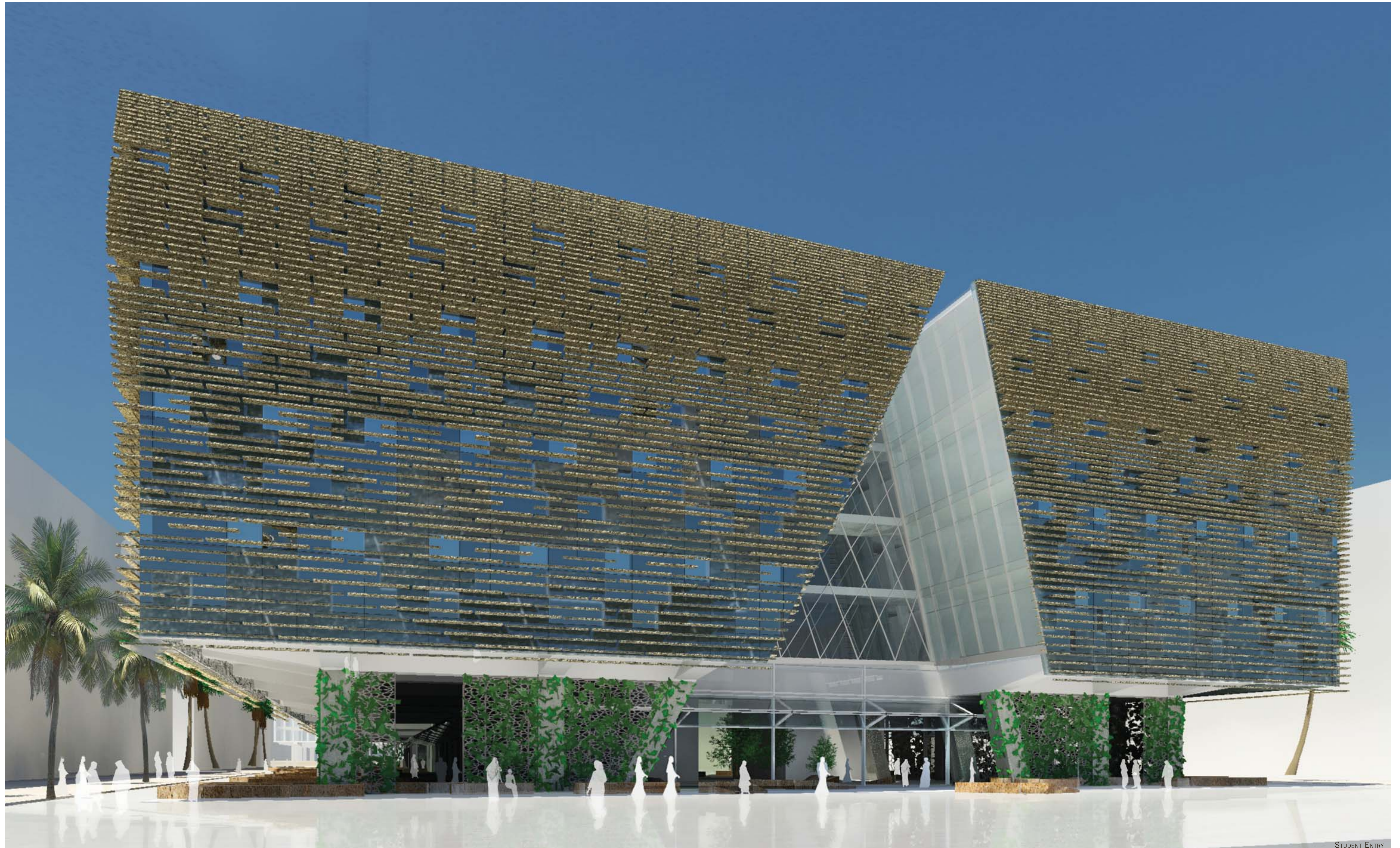
#### TENTS: CONCEPT IMAGES

The tent holds a special symbolic place in the traditions of Arabia: its social function, materiality, form, and environmental performance are sophisticated responses to the specific environmental and cultural conditions of the region.

**Social function:** The diwaniya is a traditional gathering place for Kuwaitis, and is an appropriate metaphor for the spirit and function of a College of Liberal Arts; a place of gathering to exchange ideas. The Tent spaces in the proposed College of Arts, both at the ground level and in the vertical gardens in the upper levels, aim to serve a similar functions: formal and informal gathering, formal and informal teaching and learning.

**Materiality:** The fabrics of the traditional tent structure produce a powerful effect of layering of textures and colors, and serve as a point of departure for the layered effects of the proposed College of Arts.

**Environmental Performance:** The layered materials of the traditional tent serve as an inspiration for the layered environmental systems that control thermal and daylighting performance at the proposed College of Arts: controlled openings, at the roof admit appropriate levels of illumination into public spaces; solar shading at the exterior wall and roof reduce energy consumption; and planted "green" screens cool and clean the air at ground level gathering spaces.







# KUWAIT UNIVERSITY COLLEGE OF ARTS

FEBRUARY 2009

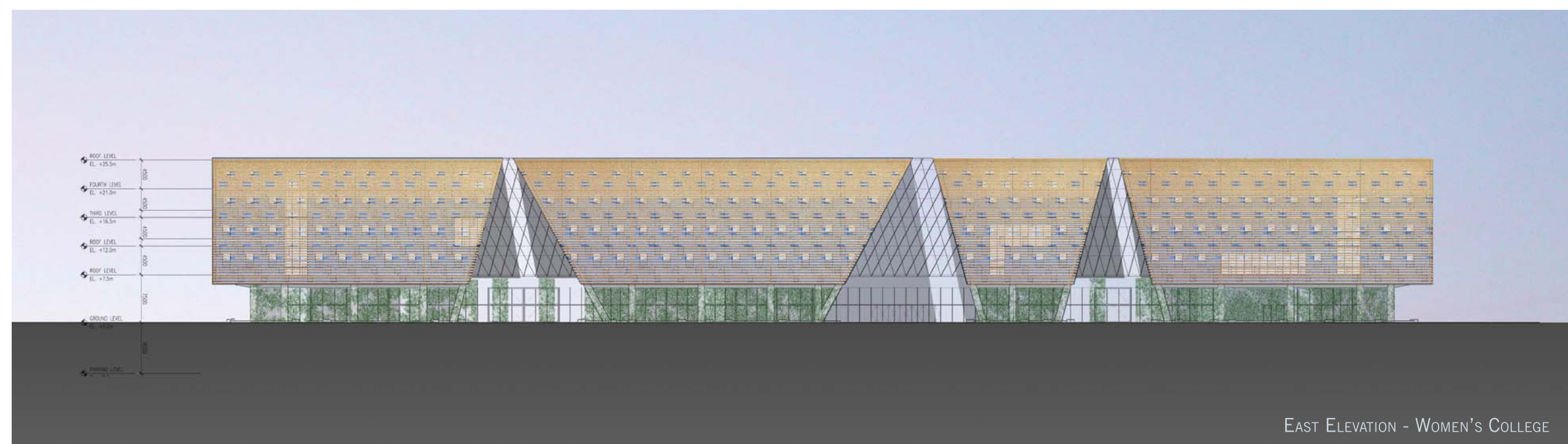


dar al-handasah  
shair and partners

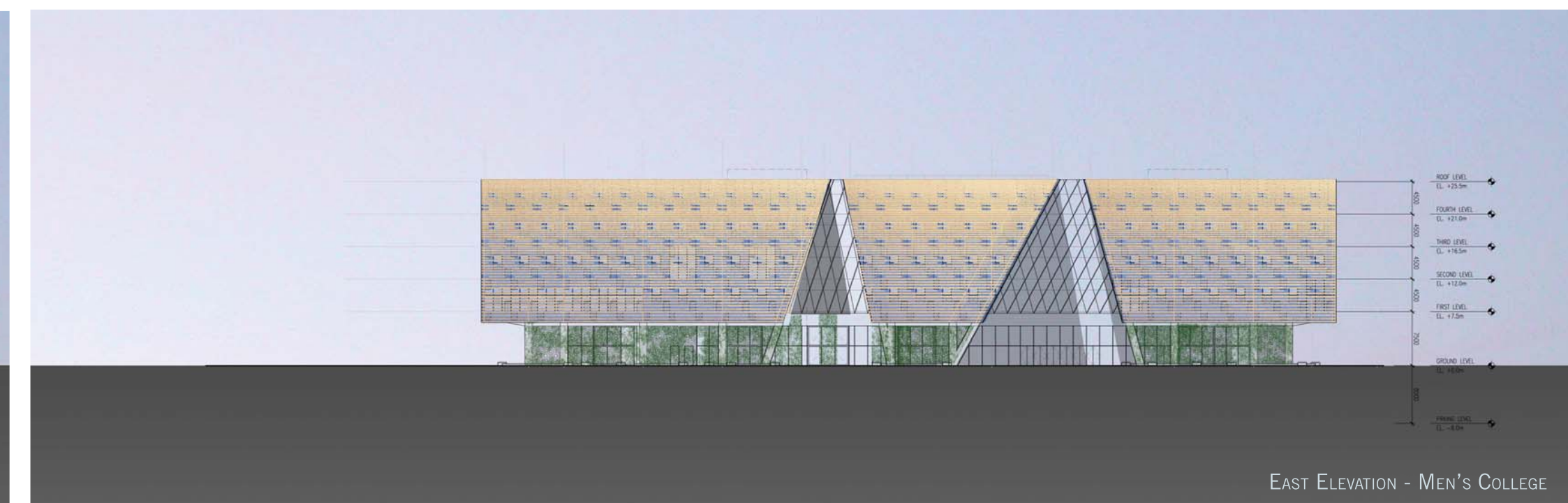
PERKINS  
+ WILL



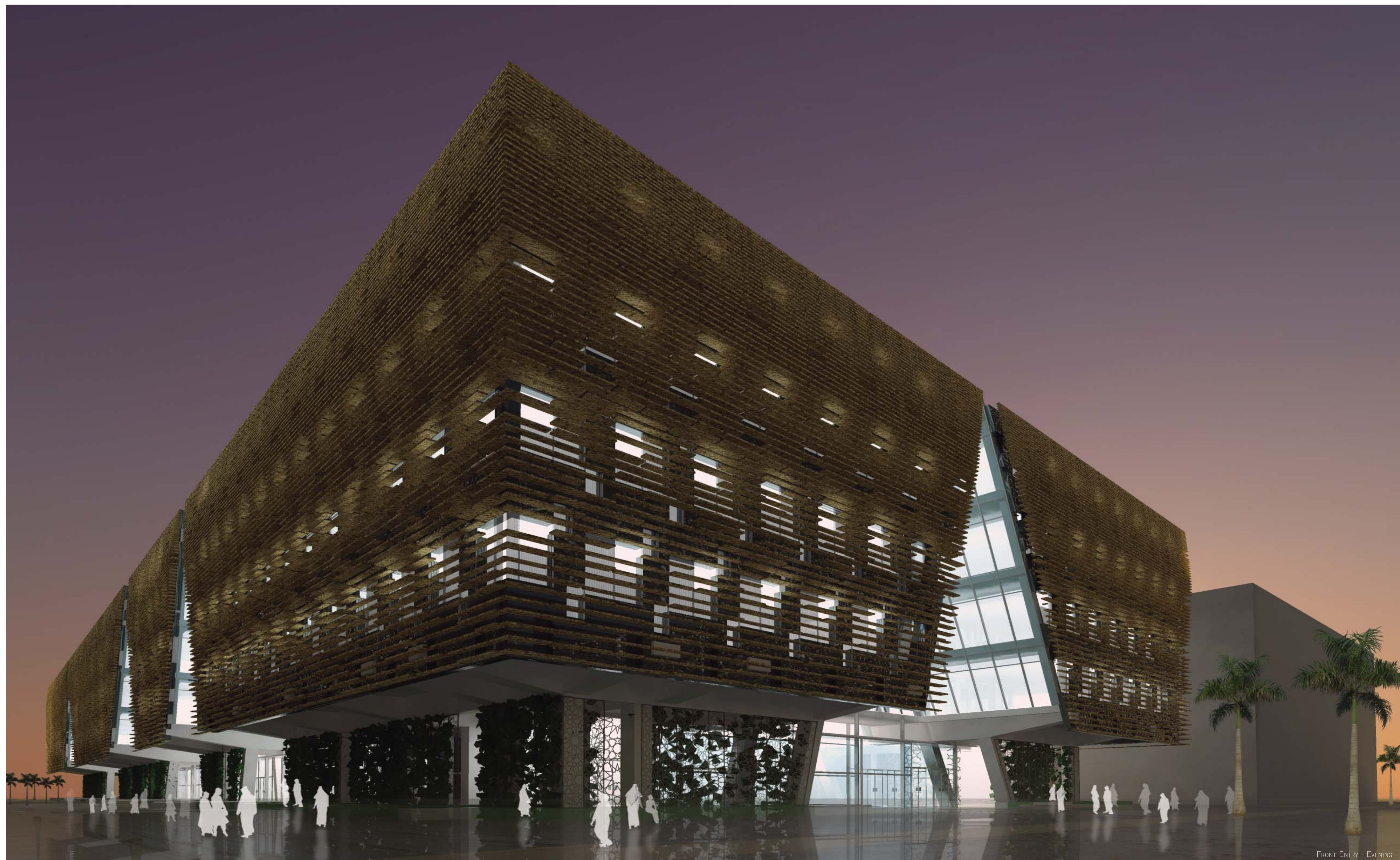
15



EAST ELEVATION - WOMEN'S COLLEGE

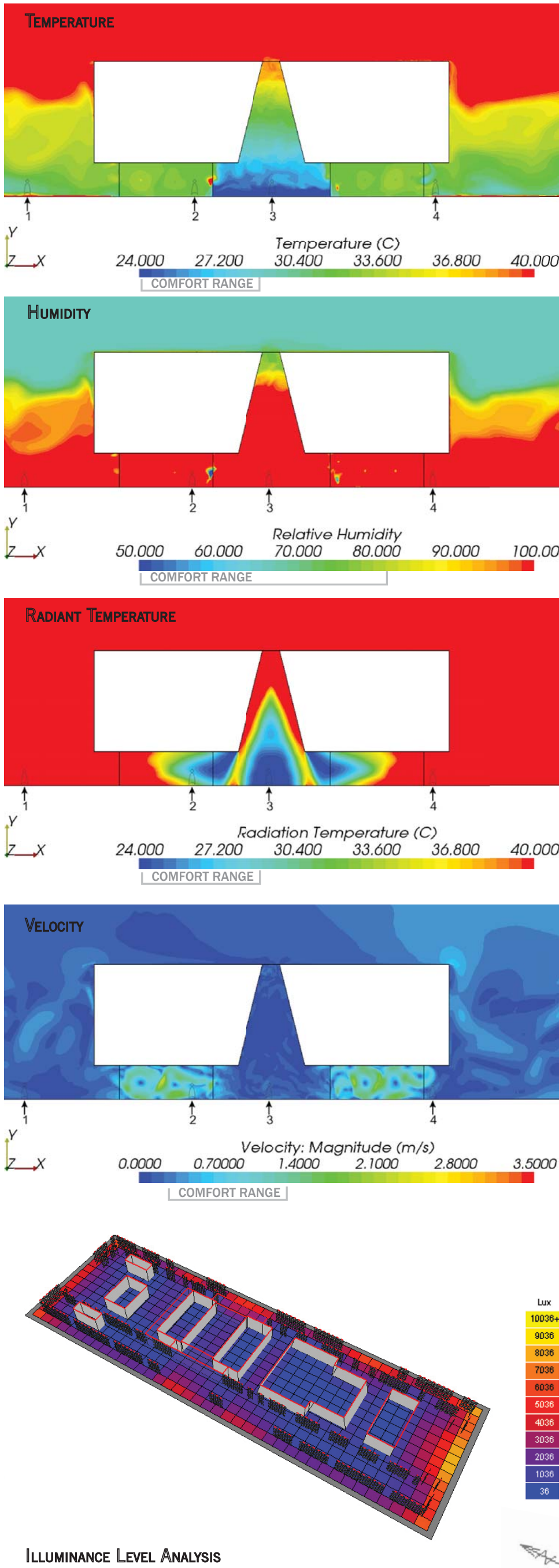


EAST ELEVATION - MEN'S COLLEGE



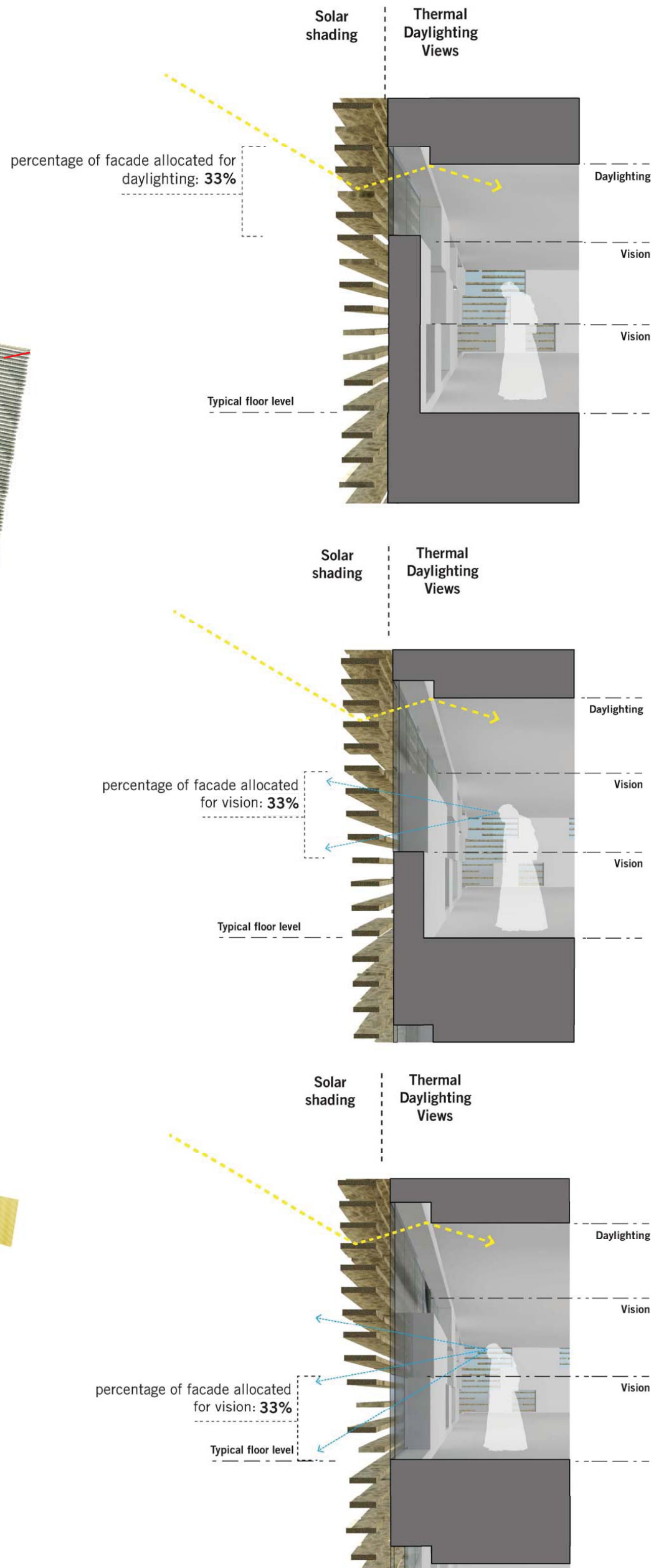
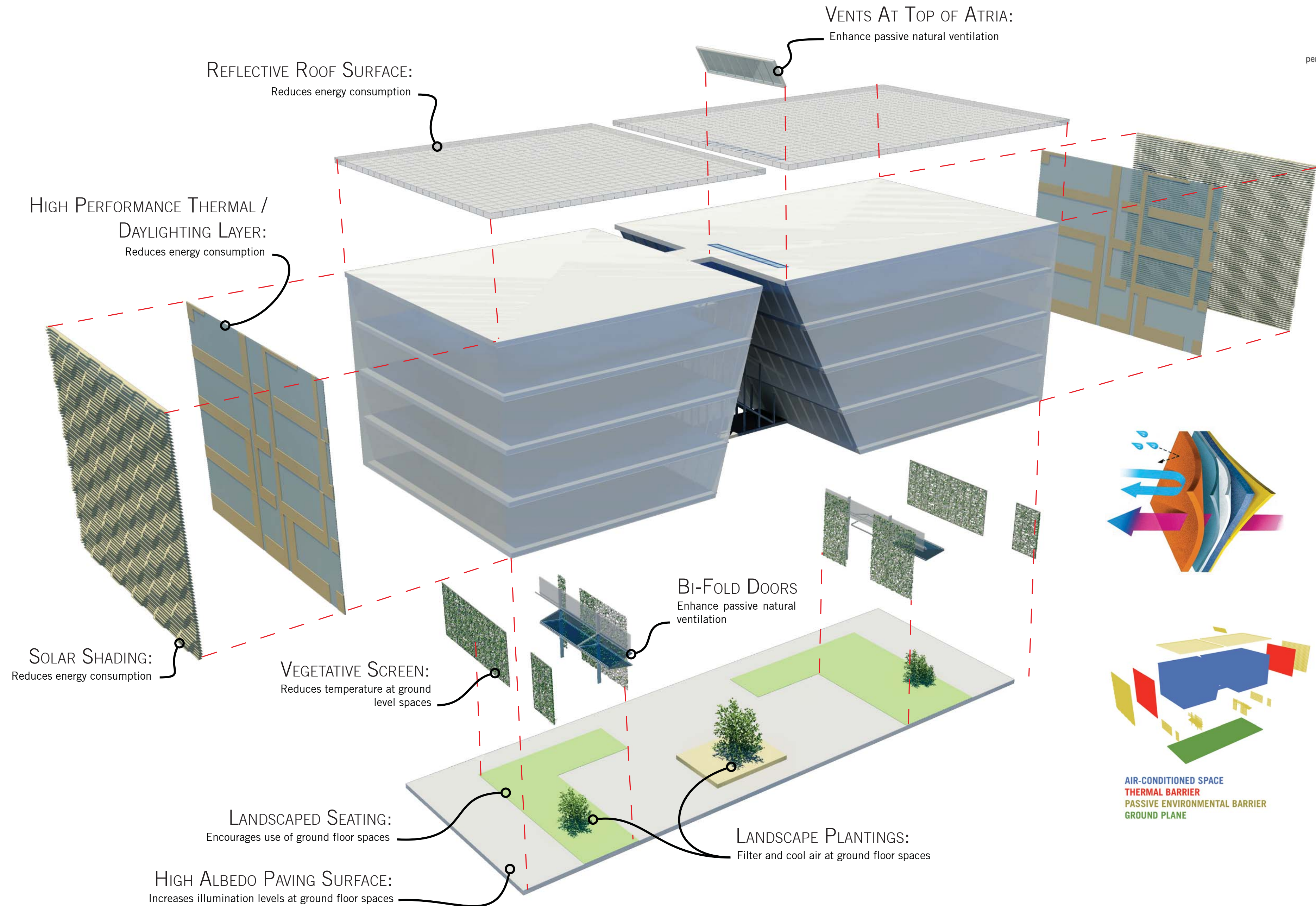
FRONT ENTRY - EVENING





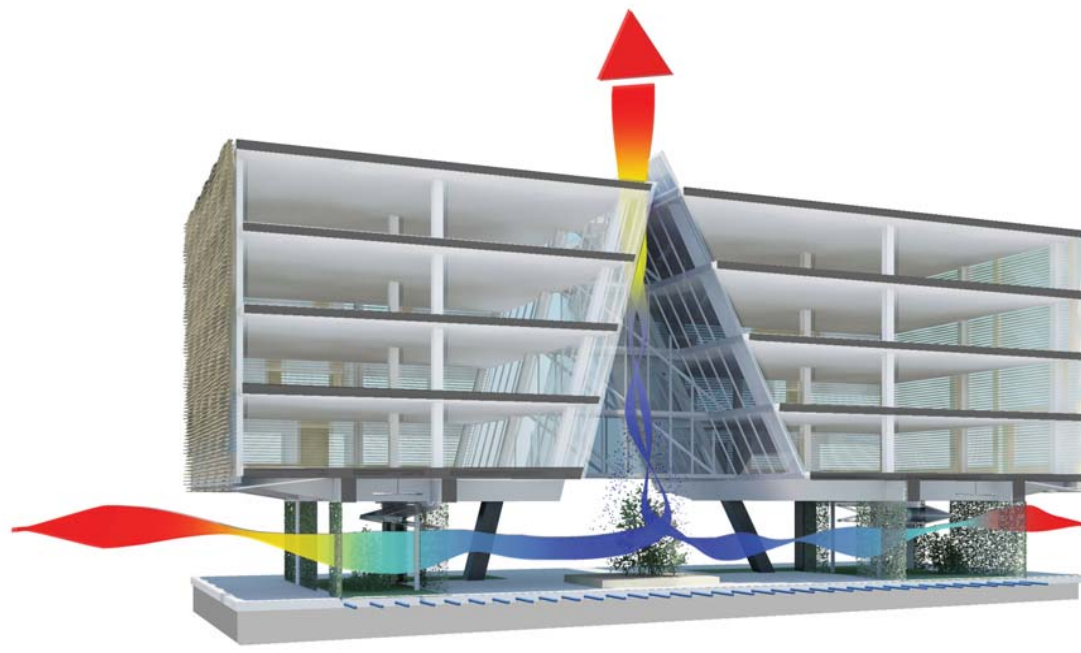
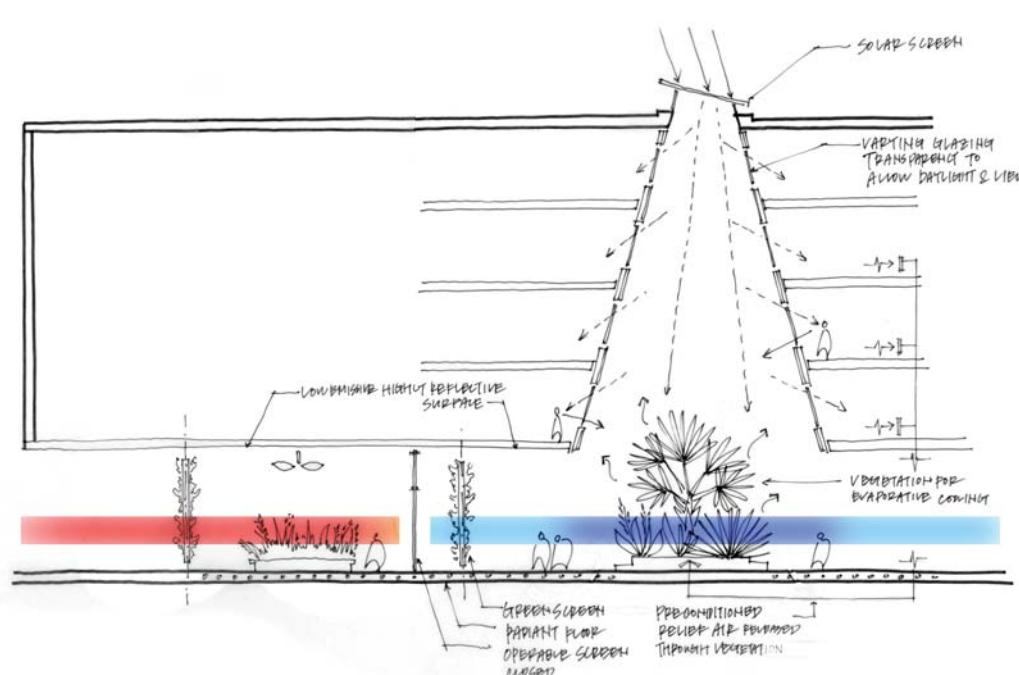
ENVIRONMENTAL PERFORMANCE

The layered materials of the traditional tent serve as an inspiration for the layered environmental systems that control thermal and daylighting performance at the proposed College of Arts: controlled openings, at the roof admit appropriate levels of illumination into public spaces; solar shading at the exterior wall and roof reduce energy consumption; and planted "green" screens cool and clean the air at ground level gathering spaces.

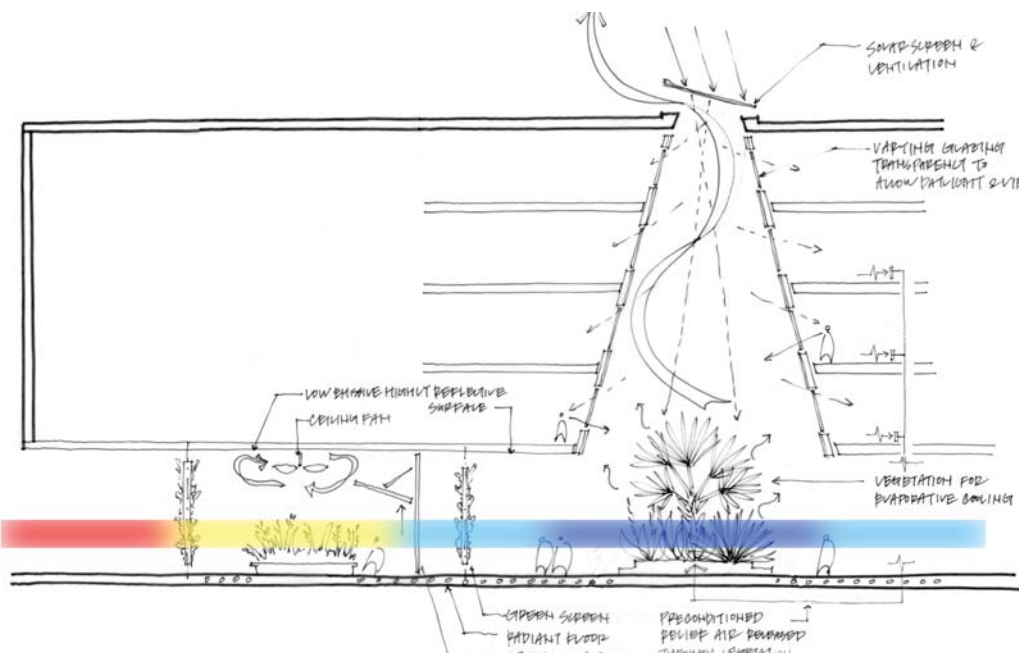


EXTERIOR DESIGN DEVELOPMENT  
THERMAL LAYER VARIATION

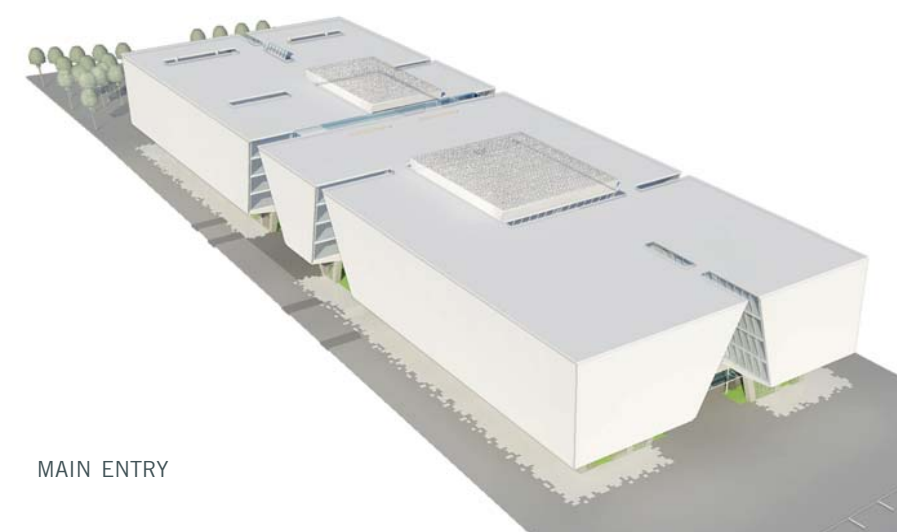
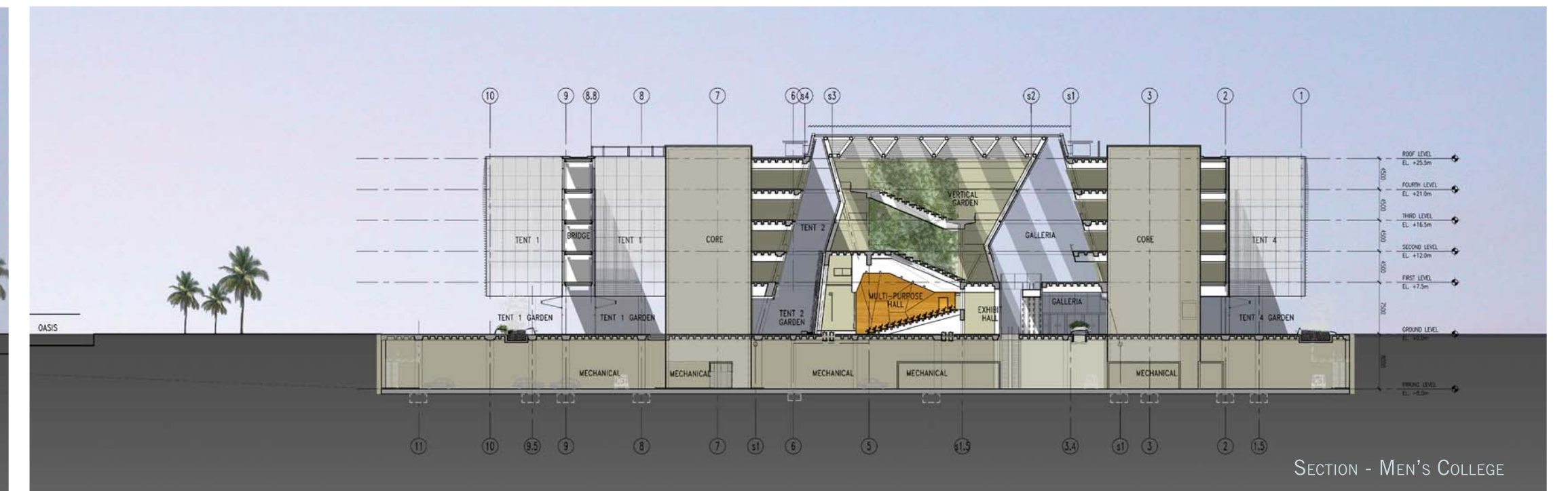
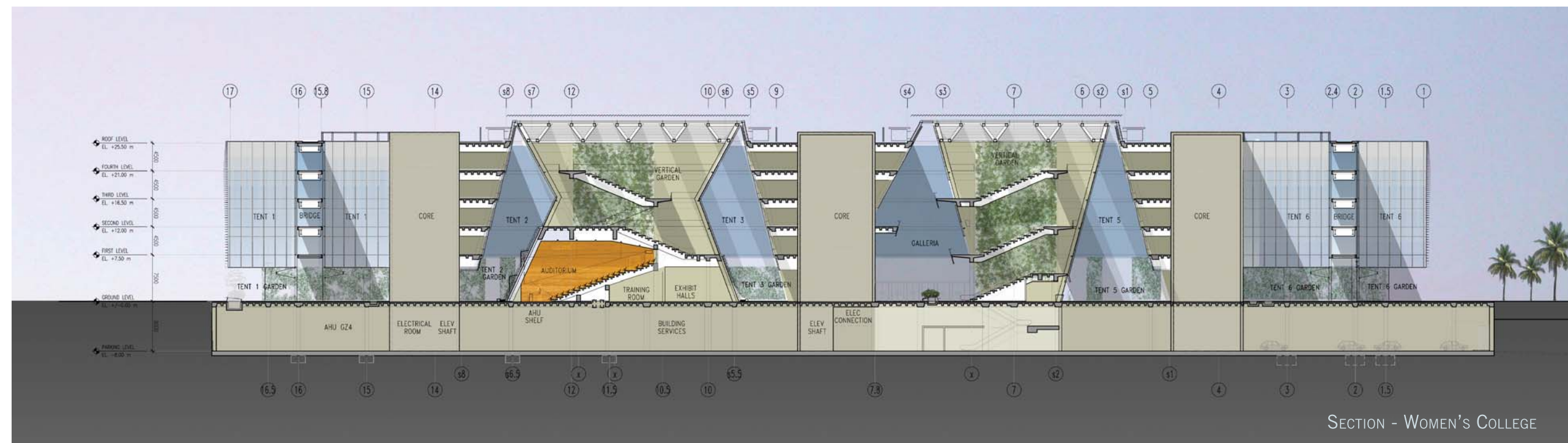
TENTS - EXTREME CONDITIONS



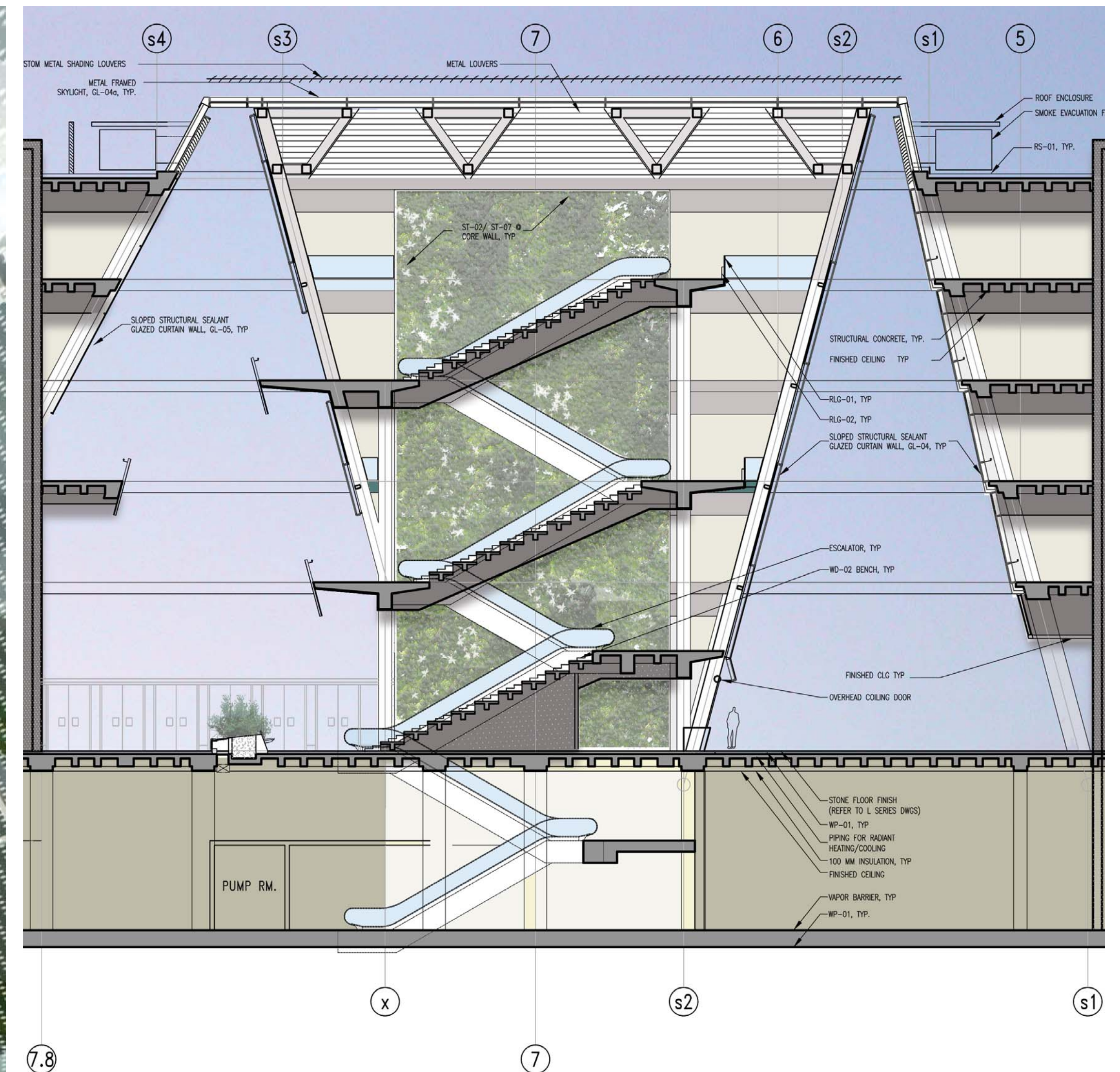
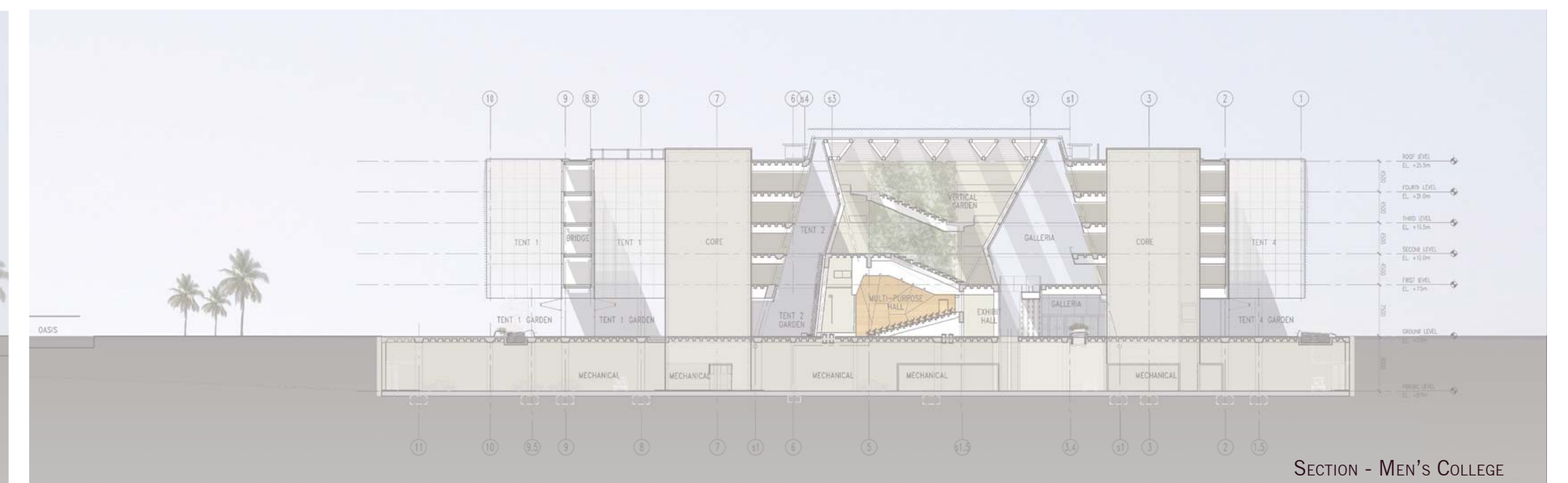
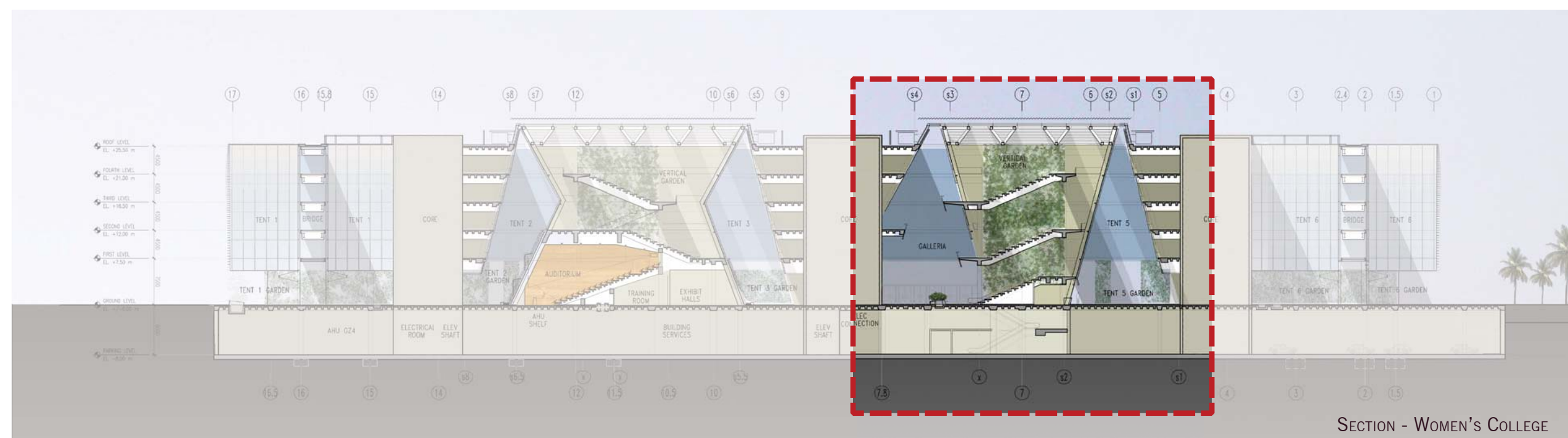
TENTS - MODERATE CONDITIONS



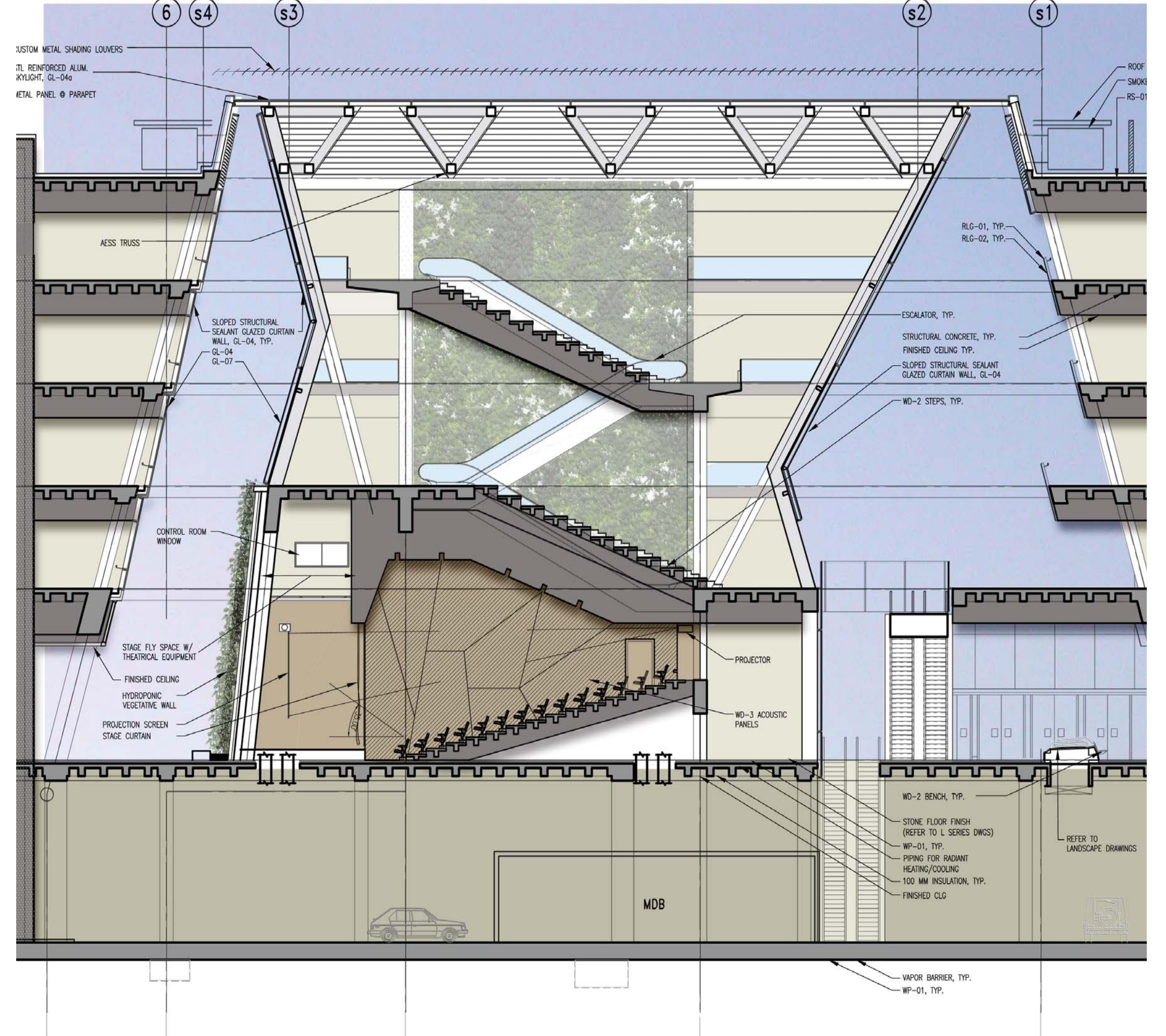
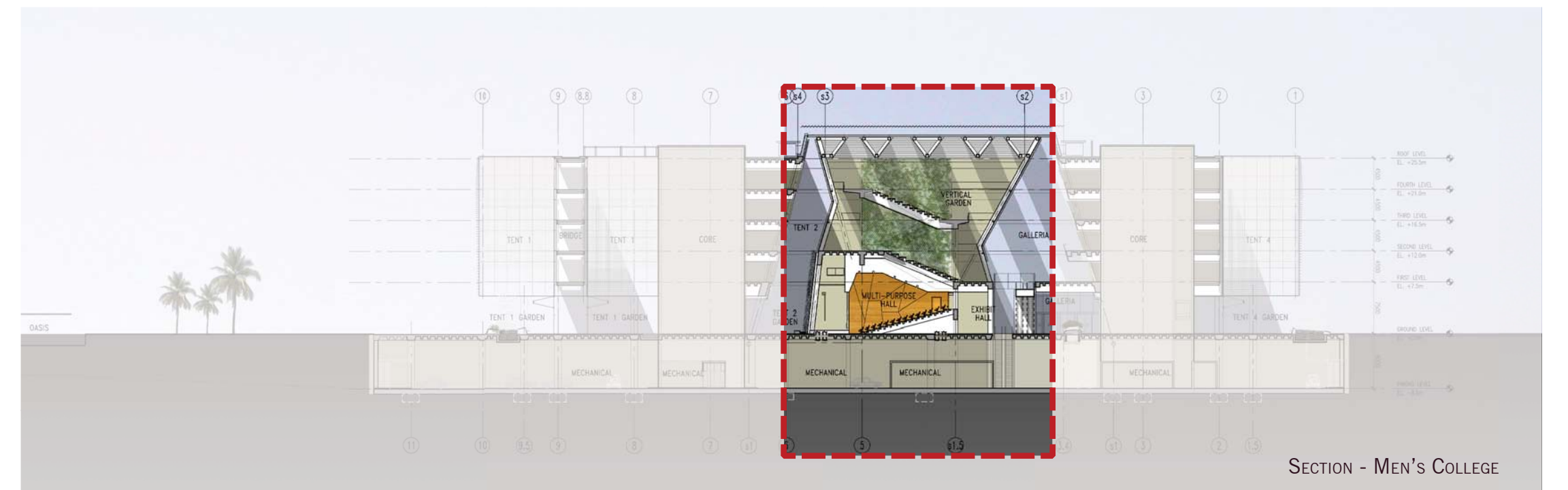










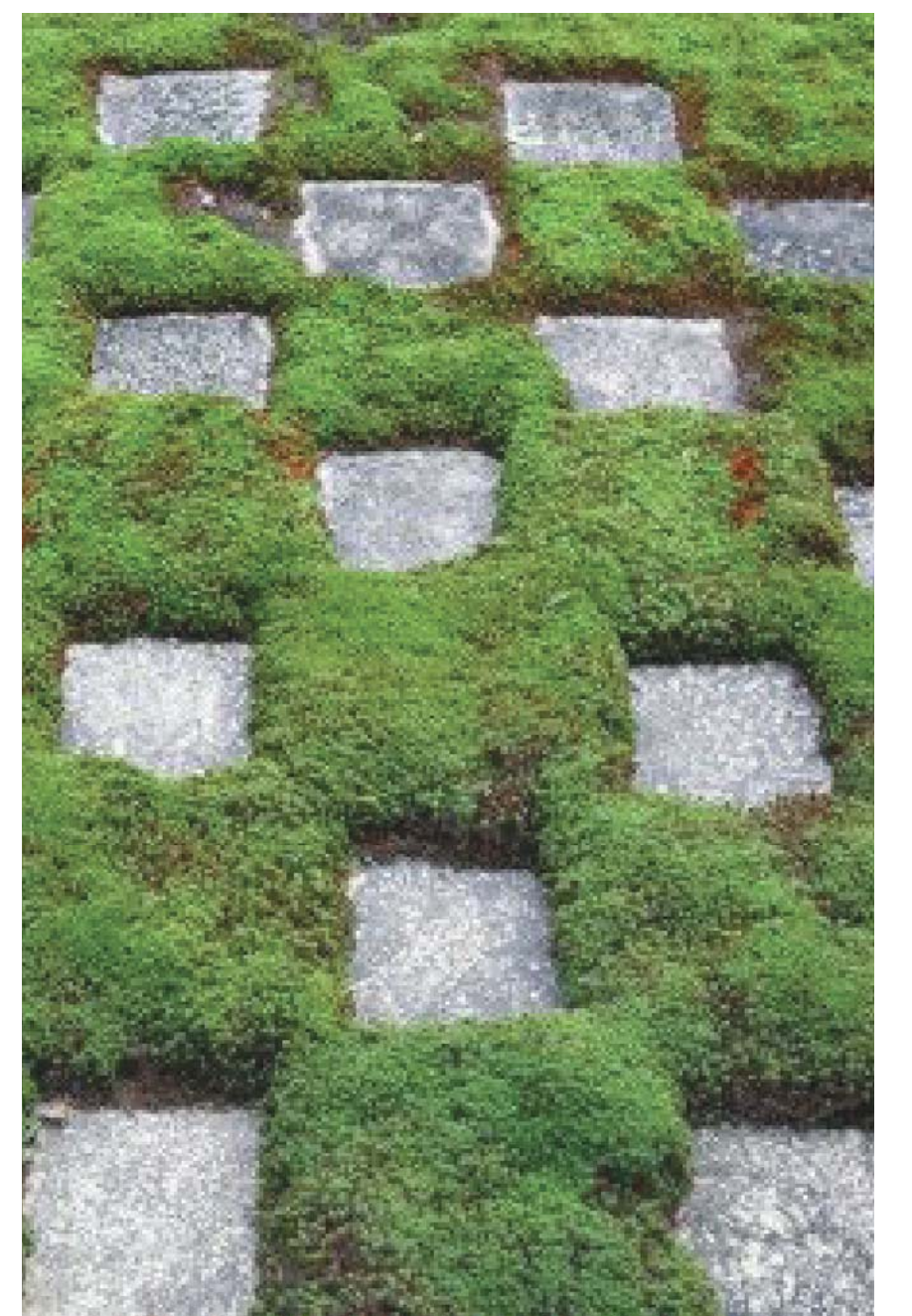


#### VERTICAL GARDENS

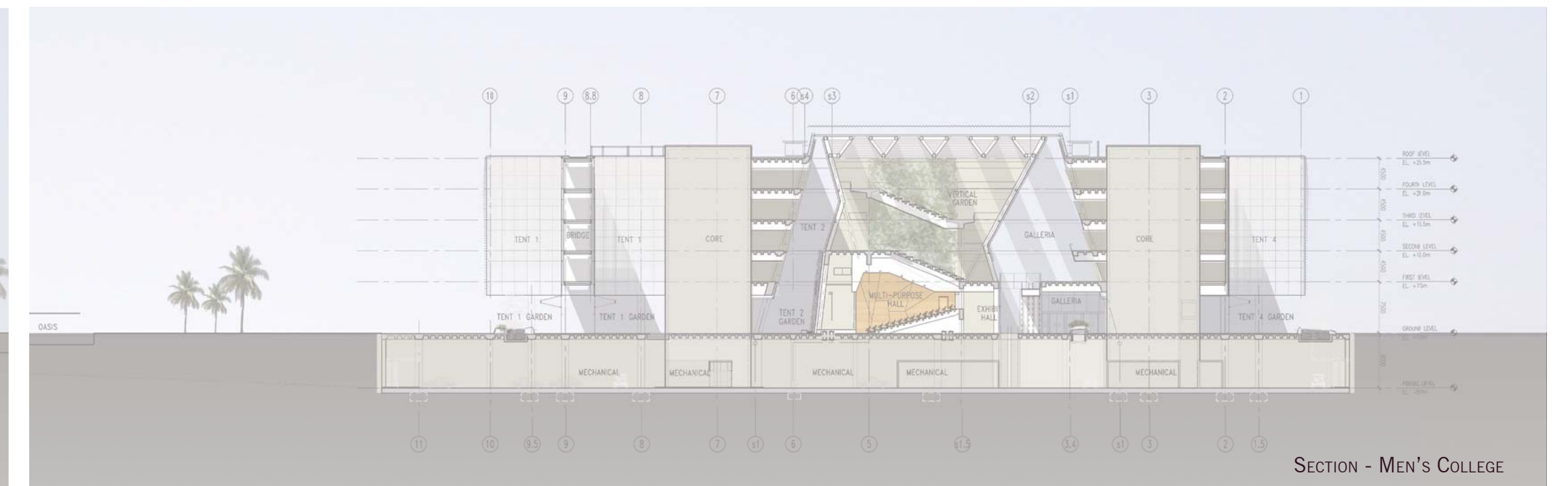
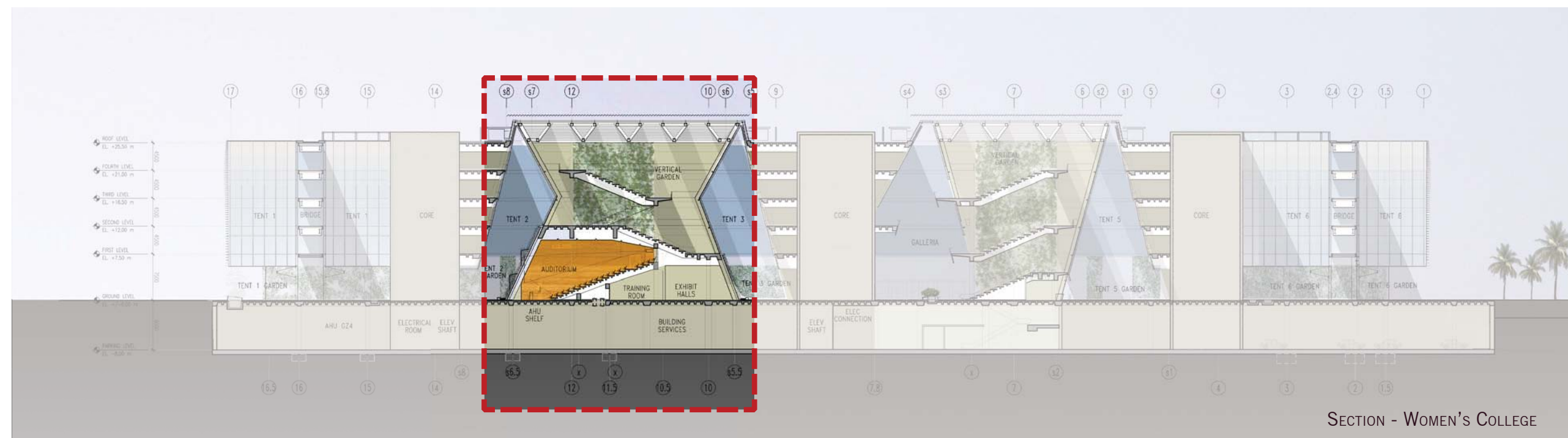
The vertical gardens act as the vertical circulation connection between the ground level and the upper floors of the college of arts; uniting its learning and office environments with the garden and public activity below.

The openness of its volume allows for a visual connection to be created between disparate functions of the college; while its lightly fritted surfaces diffuse a softened glow throughout.

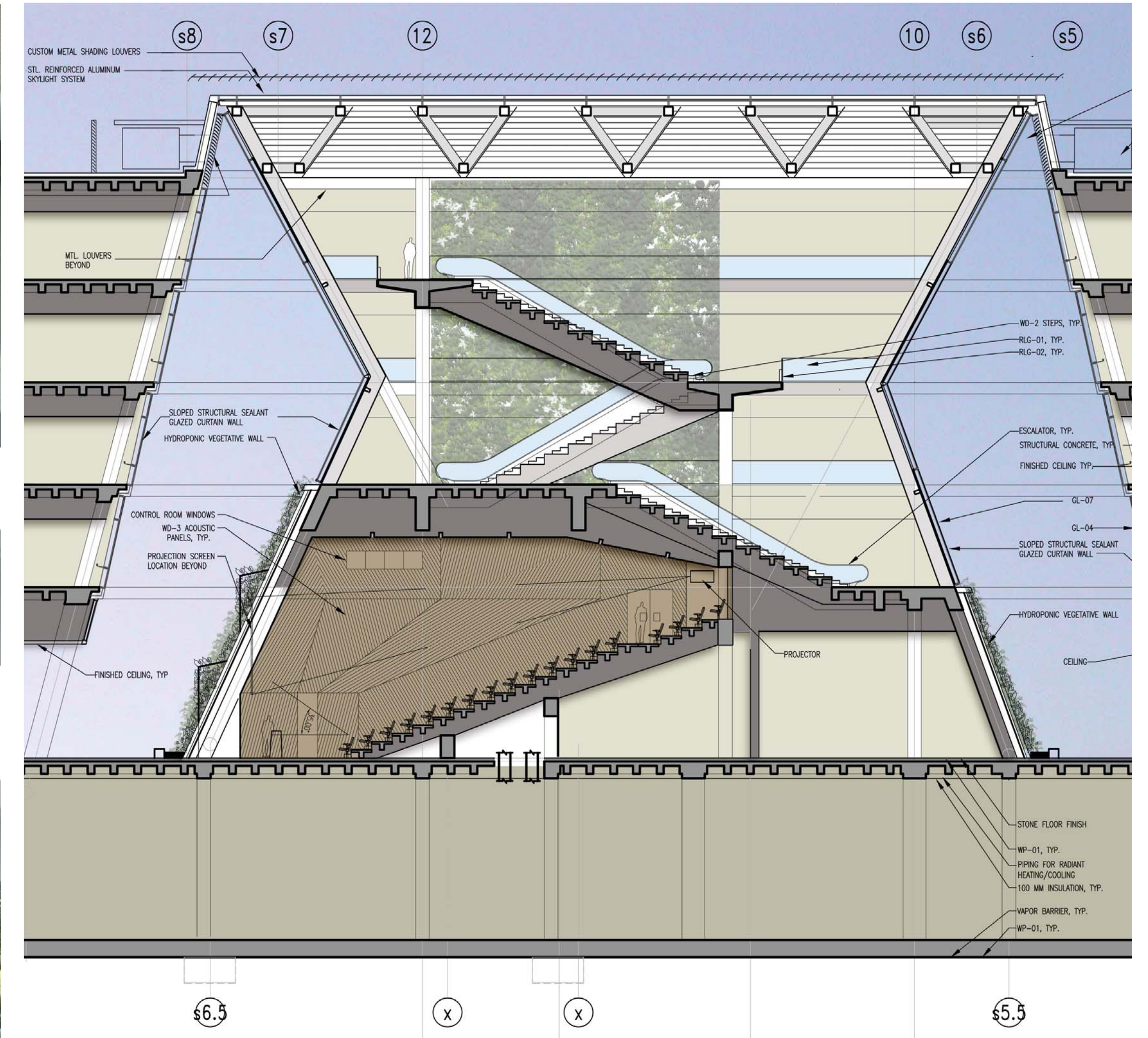
This luminescence designates the space within as hub of activity, a "lantern" to draw occupants of the college into a space for both interaction and repose.







VIEW AT EXHIBIT HALL



ENLARGED WOMEN'S AUDITORIUM SECTION







# KUWAIT UNIVERSITY COLLEGE OF ARTS

FEBRUARY 2009

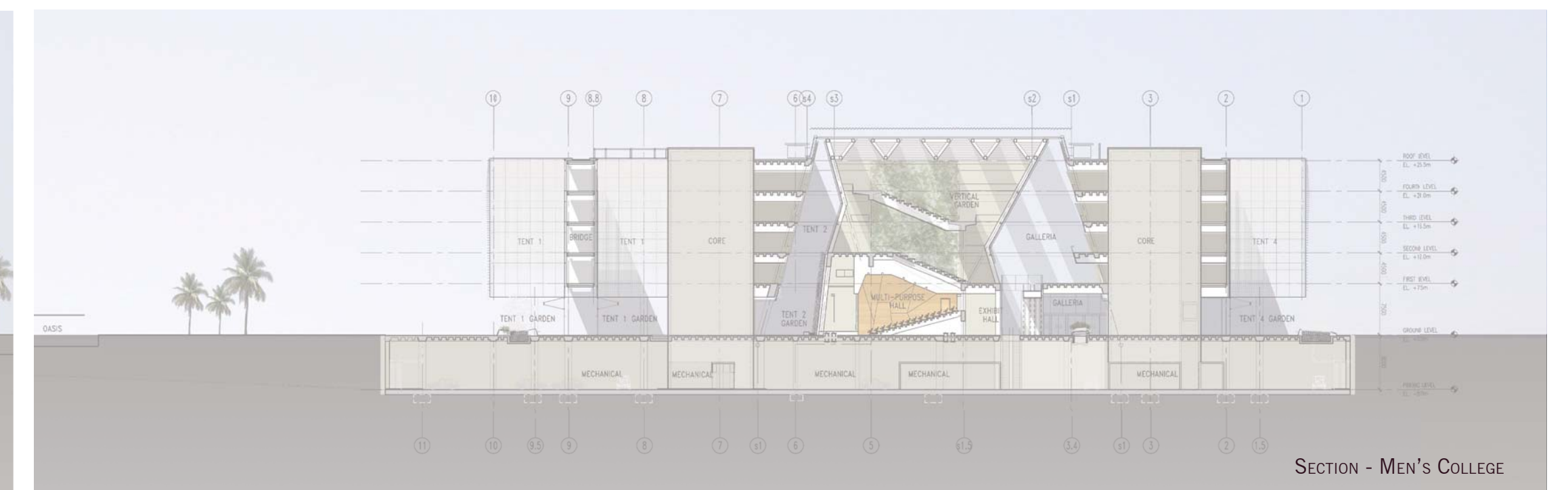
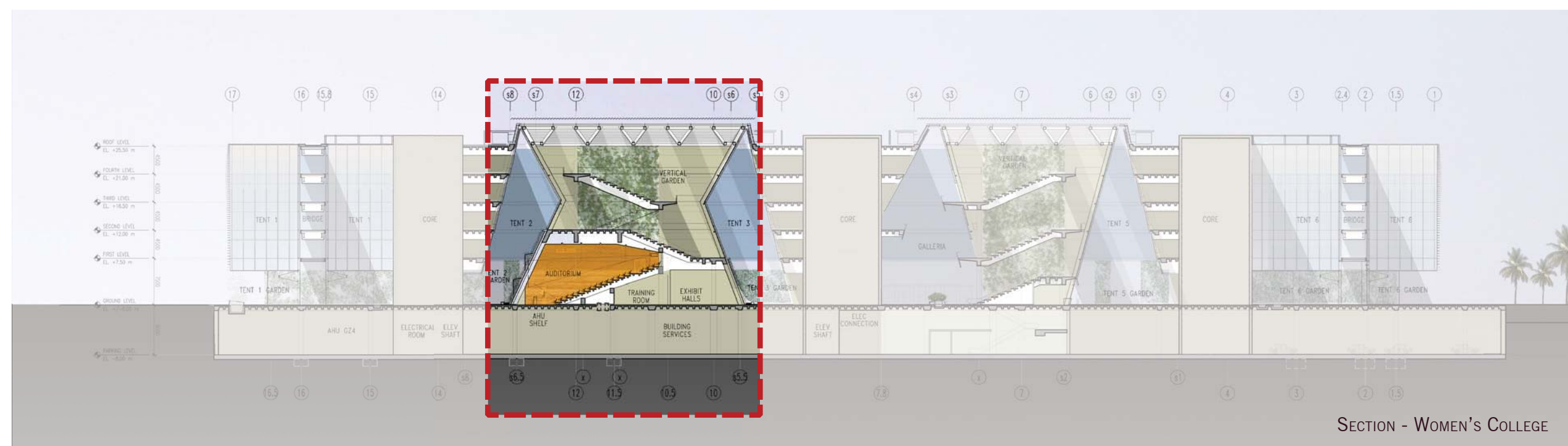


dar al-handasah  
shair and partners

PERKINS  
+ WILL



16



View At Exhibit Hall